

**Foster** 

**VC Kids**

**21<sup>st</sup> Century Caregiving :**

**Foster VC Kids Resource Family Training  
Session 3**

# Day Three Learning Objectives

▶ Describe the characteristics of an **effective partnership**.

▶ Identify the **primary partnerships** and describe their roles within the system of care.

▶ Explain how the **case plan forms a roadmap to permanency** for children and families.

▶ Define the **resource family's role within the context of the case plan**.

▶ Explain how **attachments are formed and their importance for a child's mental health** and define the **resource family's role in helping a child form and transfer attachments**.

▶ Define the **resource family's role as a family mentor** and identify **strategies for nurturing and promoting family connections and attachments**.





**“Individual commitment to a group effort -- that is what makes a team work, a company work, a society work, a civilization work.”**

**Vince Lombardi (1913- 1970)**

American football coach, national symbol for single-minded determination to win

# Activity



Characteristics of

**Good Partnerships**

# Characteristics of an Effective Partnership

**Common  
Perceived  
Needs**



# Characteristics of an Effective Partnership

**Clear  
Mission &  
Outcomes**

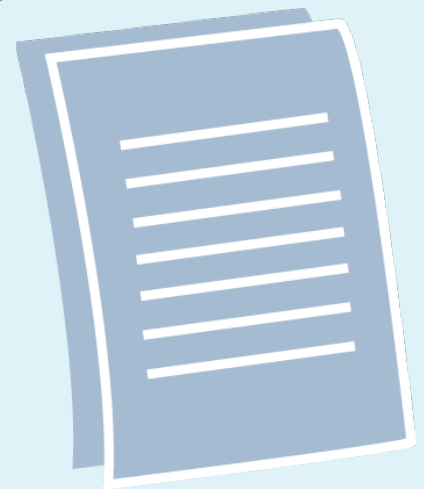
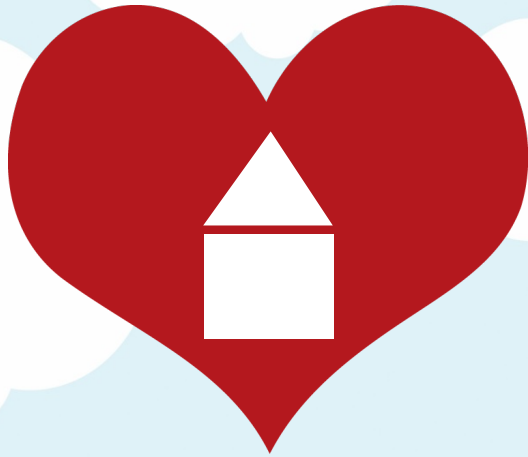


# Characteristics of an Effective Partnership



Supported by **Leadership**

# Characteristics of an Effective Partnership

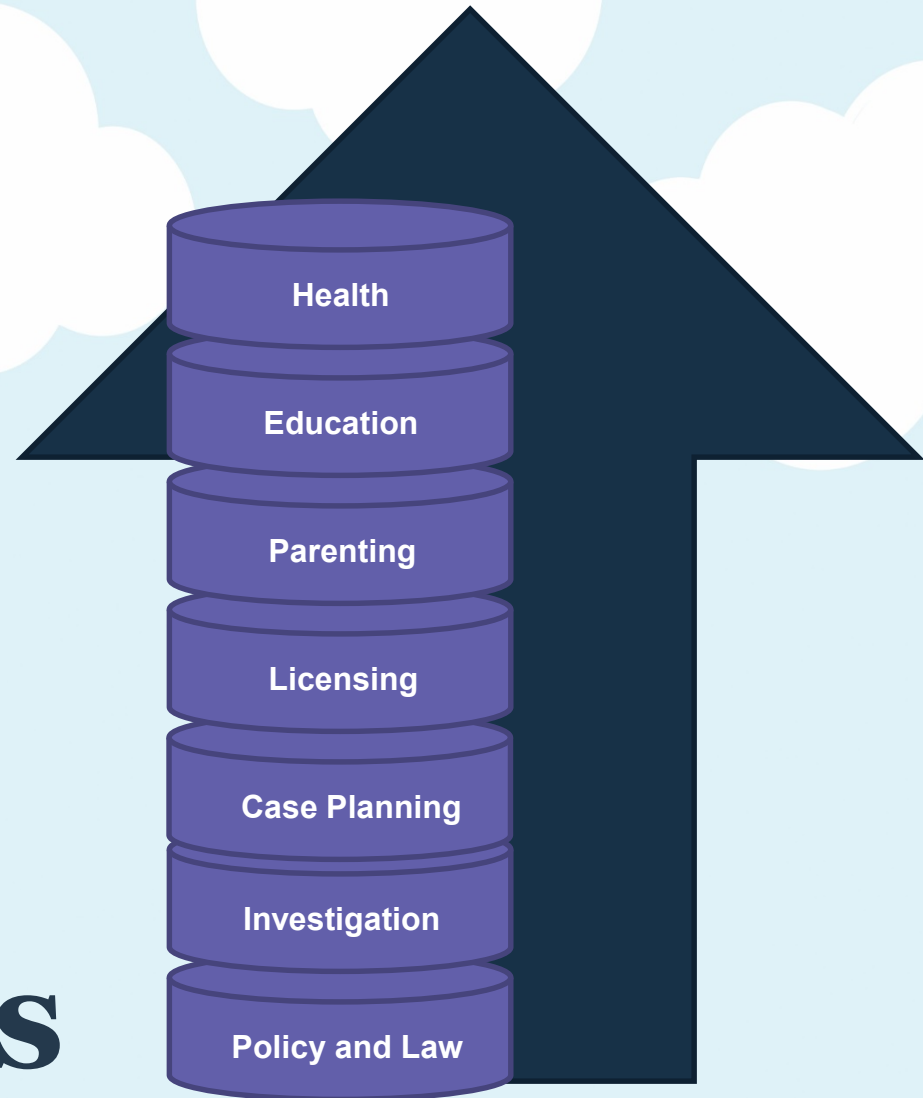


**Clearly Defined  
Roles &  
Responsibilities**



# Characteristics of an Effective Partnership

Build off of  
**Skills,  
Strengths  
& Resources**



# Characteristics of an Effective Partnership

**Respect  
& Value  
contributions,  
strengths and skills**

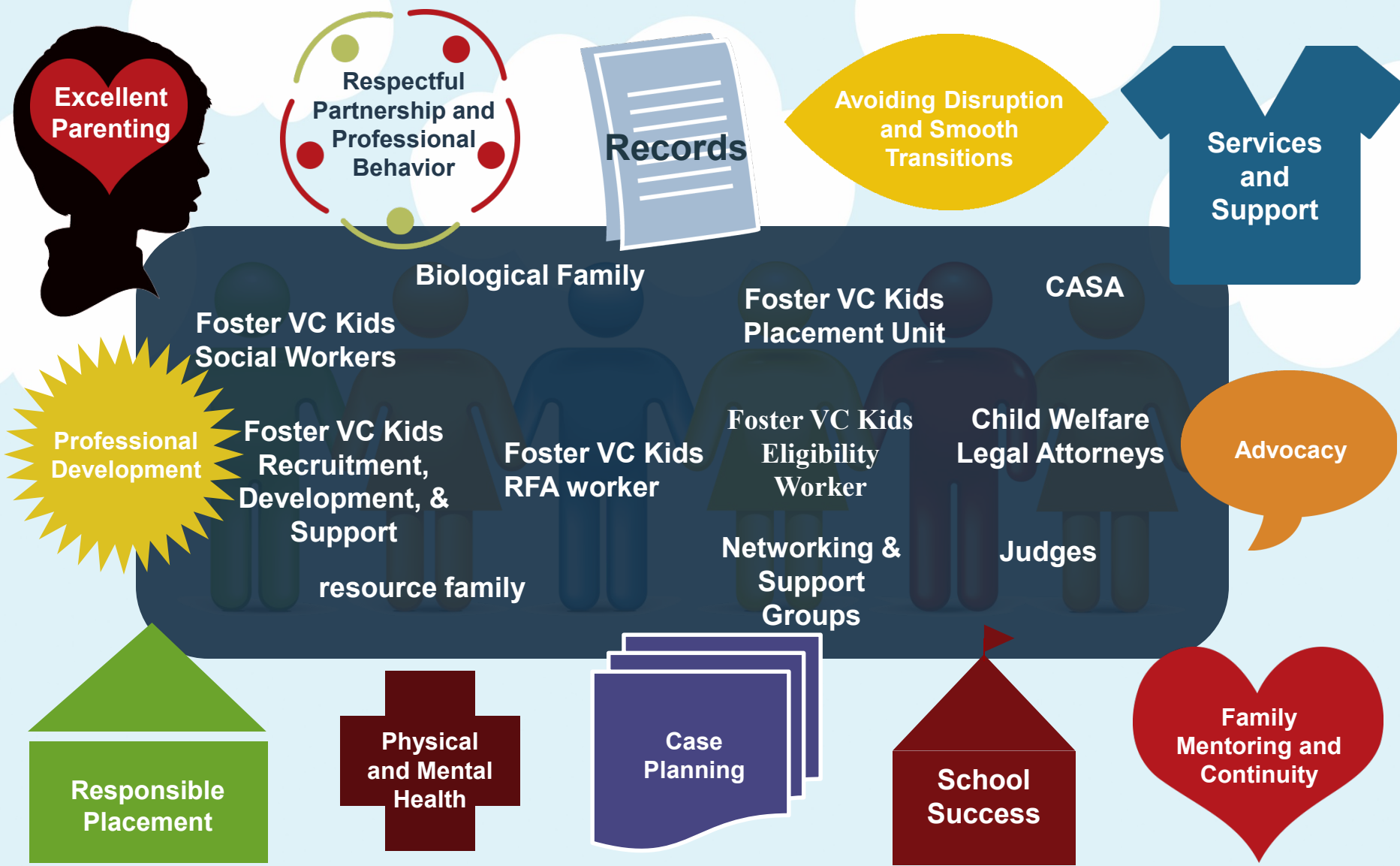


# Characteristics of an Effective Partnership

## Effective Communication Systems



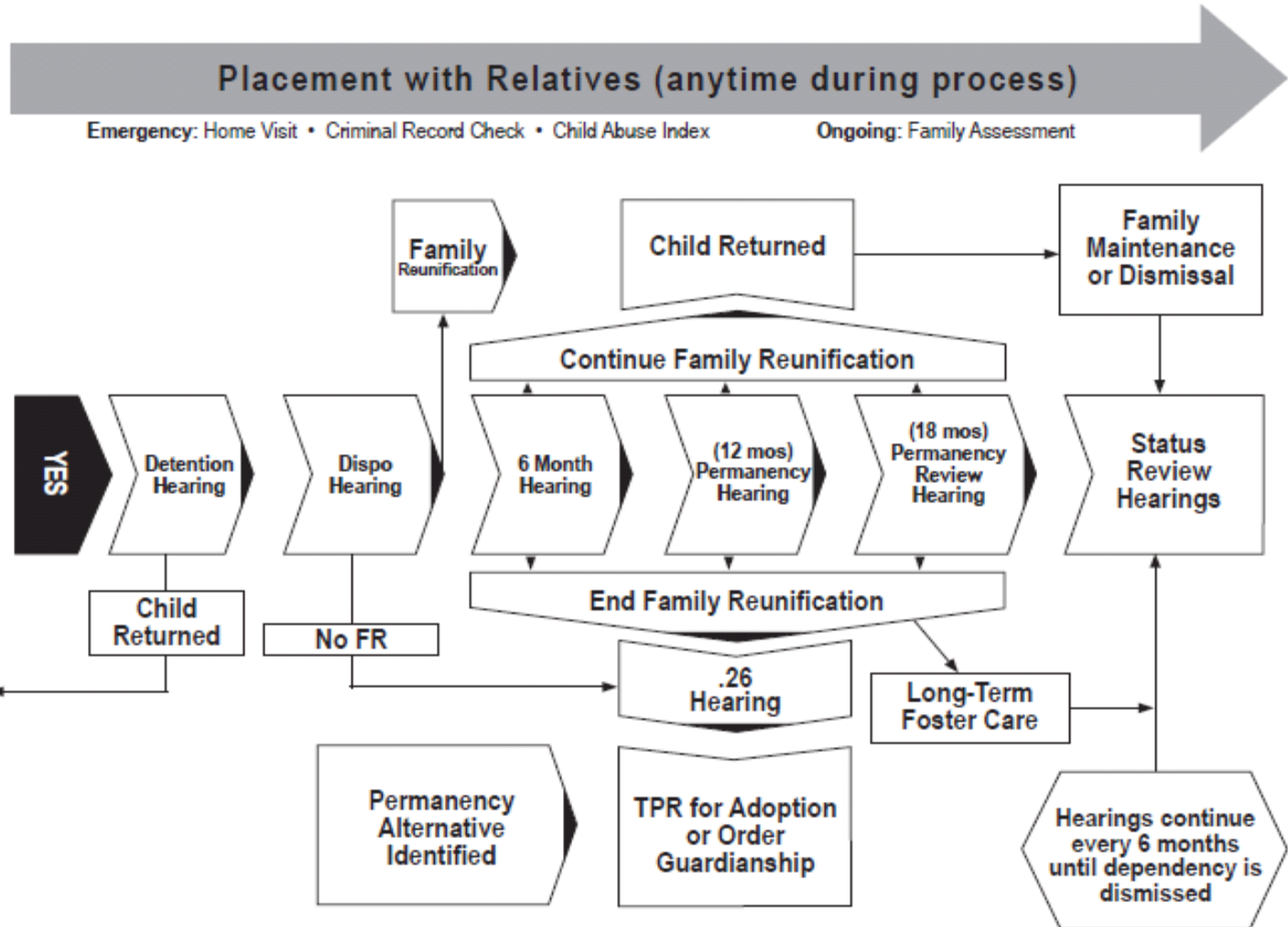
# The Partnership Agreement



# Snapshot of a CFS Case



## Children & Family Services Child Welfare System



**Referral to CFS**

CFS Responds

Child Removed?

**NO**

Preventative Services

Remain with Family

**YES**

Detention Hearing

Dispo Hearing

6 Month Hearing

(12 mos) Permanency Hearing

(18 mos) Permanency Review Hearing

Child Returned

No FR

End Family Reunification

.26 Hearing

Long-Term Foster Care

Family Reunification

Child Returned

Family Maintenance or Dismissal

Continue Family Reunification

Status Review Hearings

Permanency Alternative Identified

TPR for Adoption or Order Guardianship

Hearings continue every 6 months until dependency is dismissed

# Case Plan: Biological Parents

## Reasons Child Came into Care

Events that lead to removal

Efforts made to keep child home

## Parent's Primary Tasks

Description of what they are being asked to do

Services asked to complete

Specific timeframes

Instructions for completion

## Timeframes

Parents have 12 months for completion which can be expanded for special conditions

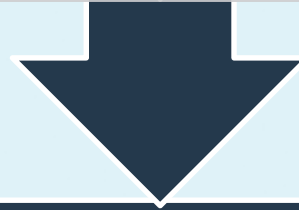
Expect the unexpected

# Case Plan: Adult Caregivers

Tasks you must complete for child(ren) in your care  
(translated on the Child's Needs & Services Plan)

Basic needs  
common to all children

Special needs related  
to the needs and goals  
for the child(ren) in your care

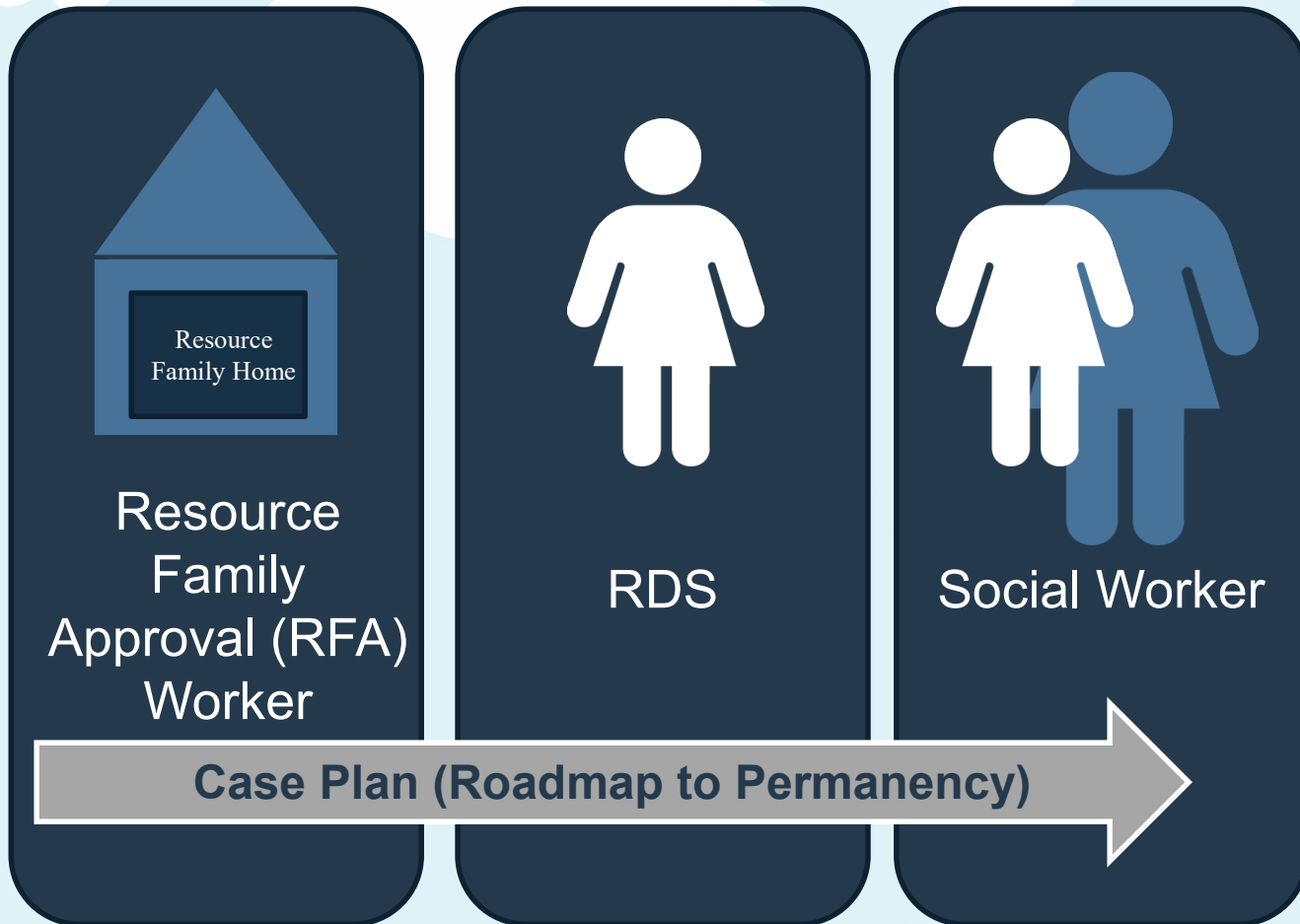


These tasks are the business of the team

Social Worker

RDS, RFA worker, other partners

# Primary Partnerships





# Resource Family Approval (RFA) Social Worker

- ▶ Safety Role
- ▶ Compliance Role
- ▶ Represents Agency Accountability for Safe and Nurturing Care for Children
- ▶ Your RFA worker is always available to you but may not be in contact with you with every placement.



# Recruitment, Development & Support



RDS

- ▶ Foster VC Kids staff specifically available to resource families
- ▶ Can provide resource information, linkage to services, and placement support
- ▶ You will be assigned an RDS worker when you receive your approval and they will schedule a time to meet you and conduct what is called a new home visit to get to know you more and discuss resources.
- ▶ The RDS team can help you navigate the broader Foster VC Kids system to support you in meeting any activities assigned to you on the case plan and Child's Needs and Services Plan.

# Social Worker



- ▶ Assigned to the family
- ▶ Assists parents in their case plan tasks and in process of change
- ▶ Works intensively with parents and all children for every case assigned to him/her
- ▶ Must insure needs of each child are met



**POINT**



**COUNTERPOINT**

**Resource Family** → **RDS**



**POINT**



**COUNTERPOINT**

**RDS& RFA worker → Resource  
Family**



**POINT**



**COUNTERPOINT**

**Resource Family** 

**Social Worker**



**POINT**



**COUNTERPOINT**

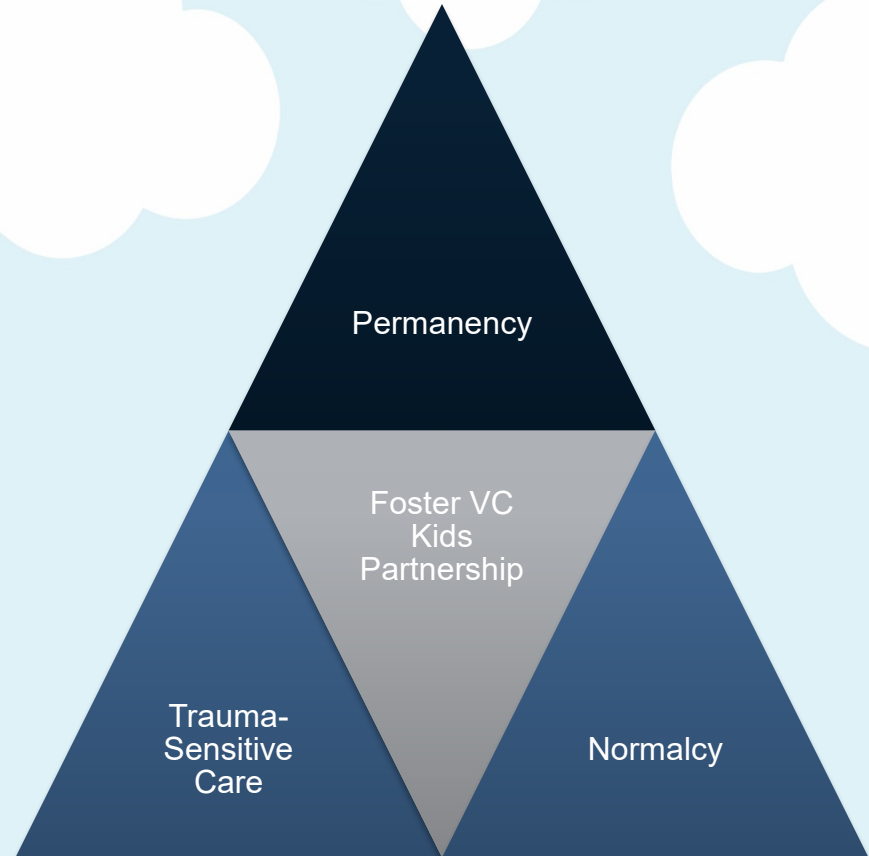
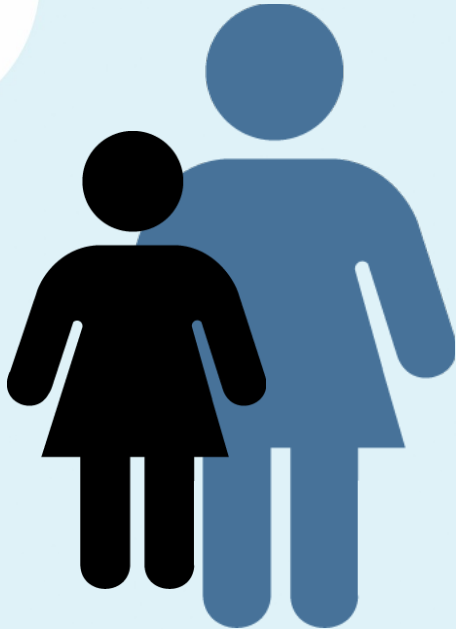
**Social Worker**



**Resource Family**

# The Purpose of our Partnership

**Protecting Children by  
Strengthening Families**





**Activity**

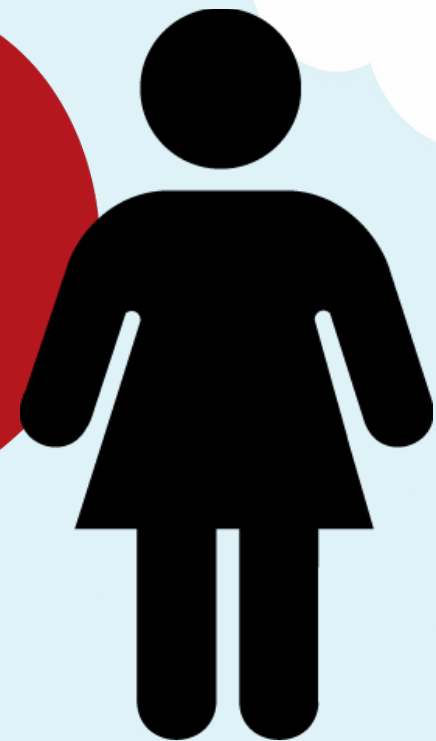
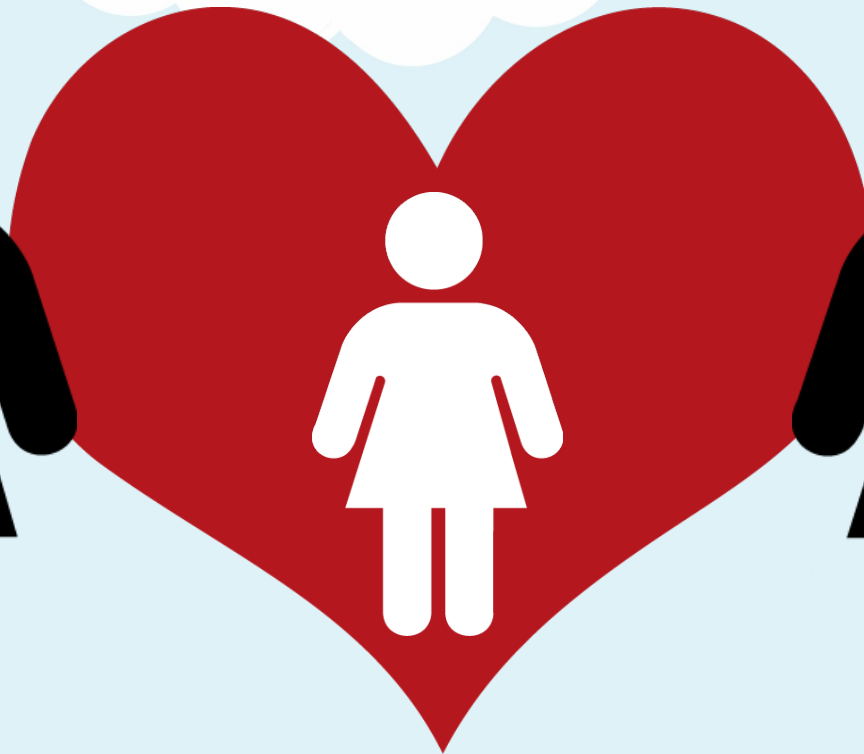
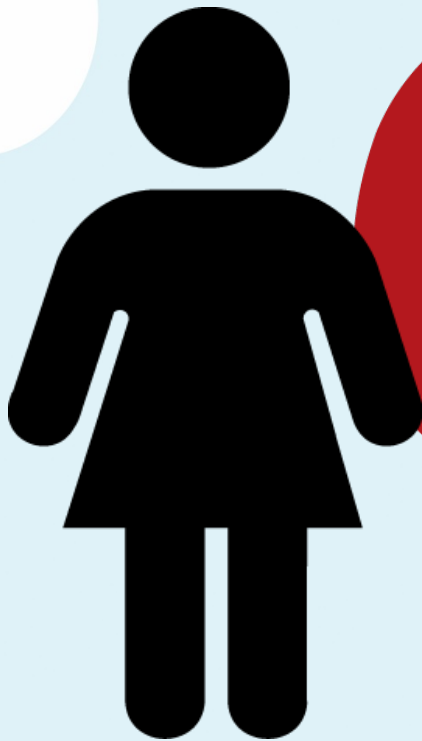


**Five Connections**

# Co-Parenting

**Resource  
Family**

**Biological  
Parent**



# Co-Parenting

## Resource Family

## Biological Parent

- ▶ Develop nurturing relationship with parent
- ▶ Prepare child for visitations
- ▶ Provide coaching, modeling and cheerleading
- ▶ Involve the parent in the child's life
- ▶ Keep child connected



- ▶ Develop relationship with resource family
- ▶ Learn from resource family
- ▶ Provide input and information
- ▶ Maintain involvement in the child's life

# Social Worker & RDS

**Support**

**Guidance**

**Boundaries**

**Communication**

**Communication**





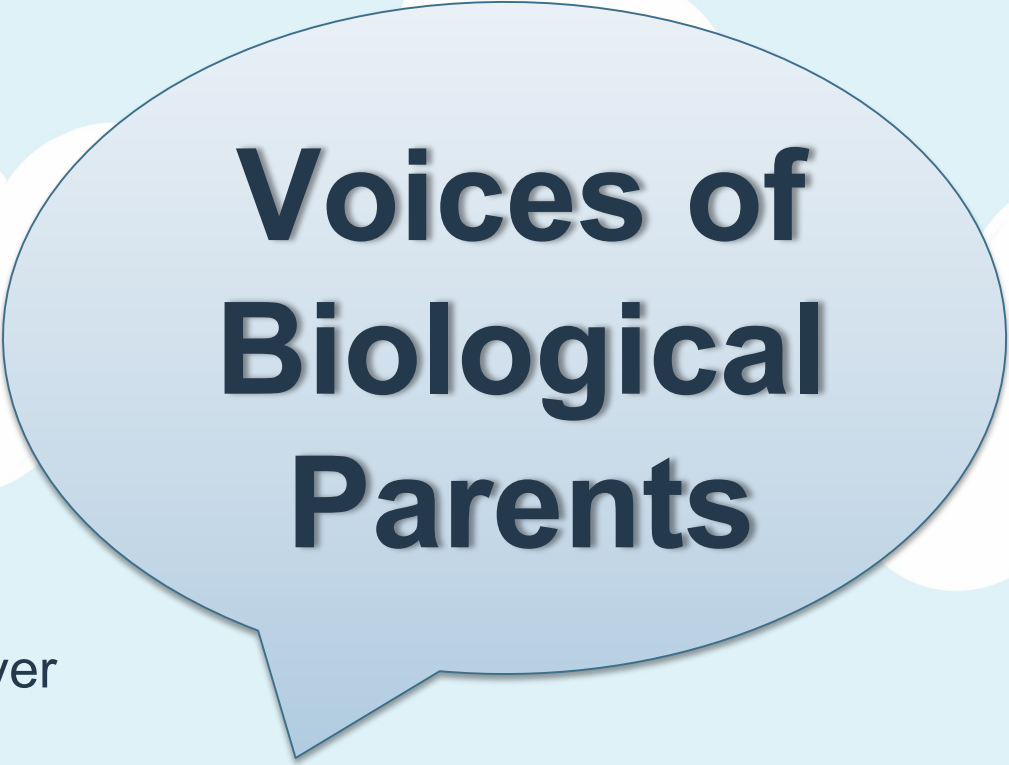
**POINT**



**COUNTERPOINT**

**Resource Family** 

**Biological Parent**



# **Voices of Biological Parents**

- ▶ What is one good thing you can say about your child(ren)'s caregiver?
- ▶ What is the best thing they did for your child while they were taking care of him/her/them?
- ▶ Do you feel that the caregiver helped you in any way?
- ▶ What is the one thing that you feel could have been done differently throughout the case?
- ▶ What has been the best part of the experience so far?
- ▶ What has been the worst part of the experience so far?



**“Attachment describes the human infant's tendency to seek comfort, support, nurturance, and protection from a small number of care givers...Based on interactions with adult caregivers, infants gradually learn to seek comfort and protection not from just anyone but selectively from caregivers upon whom they have learned they can rely.” *Dr. Charles H. Zeanah Jr***



**“The propensity for human infants to form attachments is believed to be so strong that only in highly unusual and maladaptive caregiving environments do attachments fail to develop.”**

*Dr. Charles H. Zeanah Jr.*





**“Attachment is considered a vital component of social and emotional development in the early years...and individual differences in the quality of attachment relationships ...are believed to be important early indicators of mental health.” *Dr. Charles H. Zeanah Jr.***

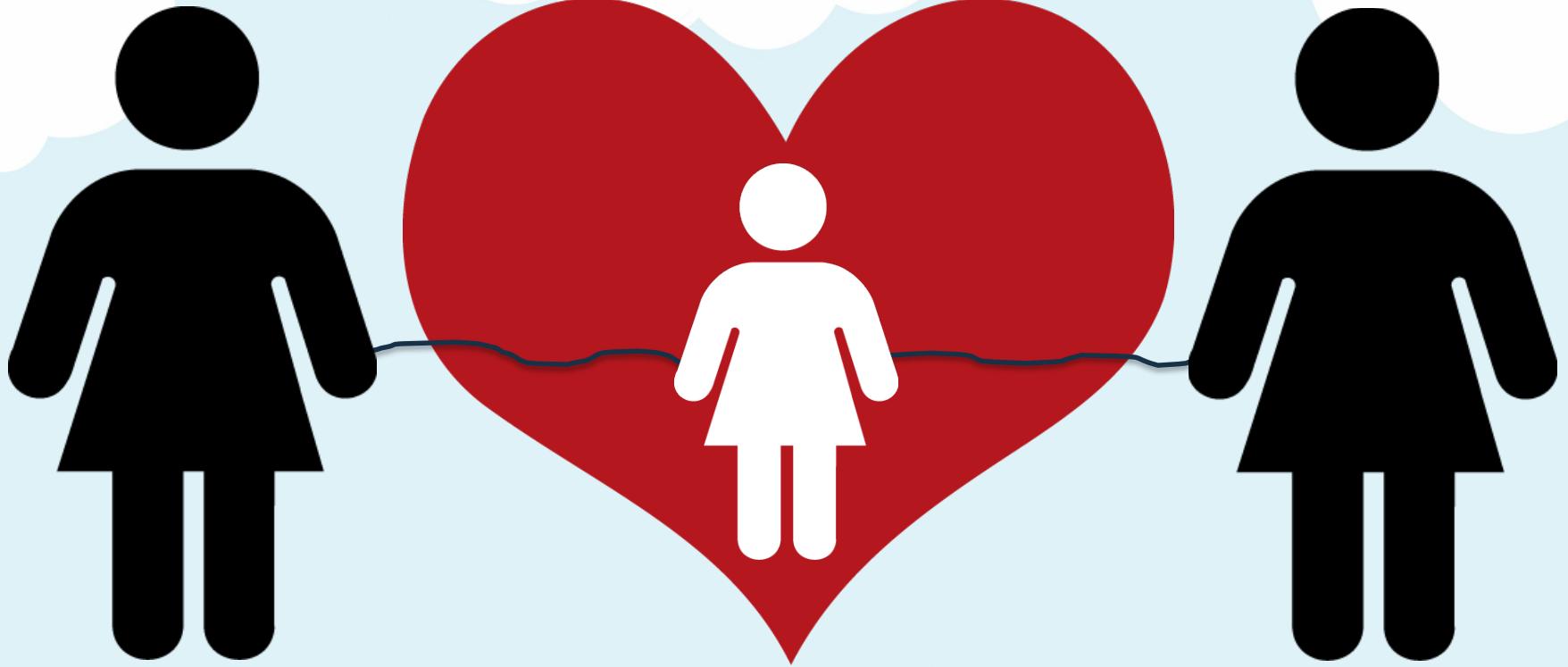


# Weaving Through a Web of Attachment

# Co-Parenting and Attachment

**Resource  
Family**

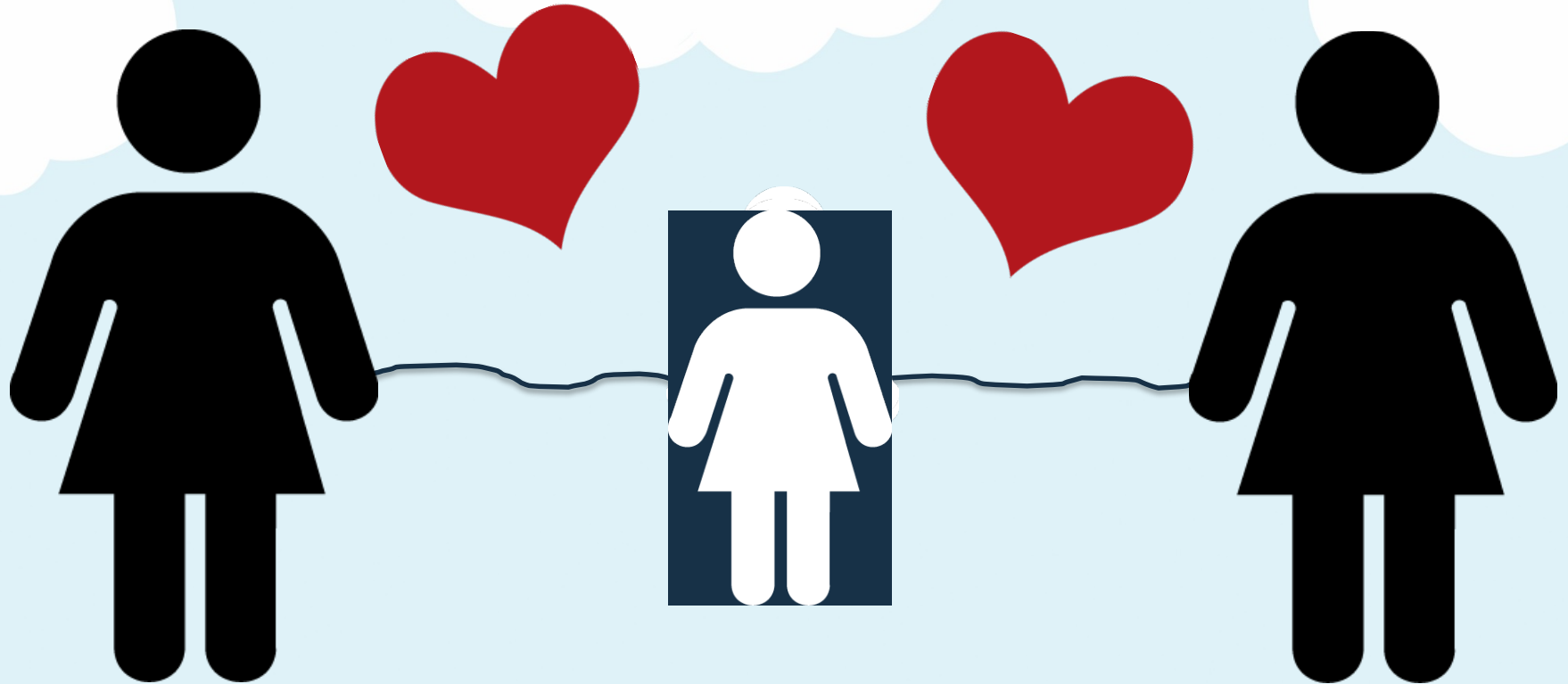
**Biological  
Parent**



# Co-Parenting and Attachment

**Resource  
Family**

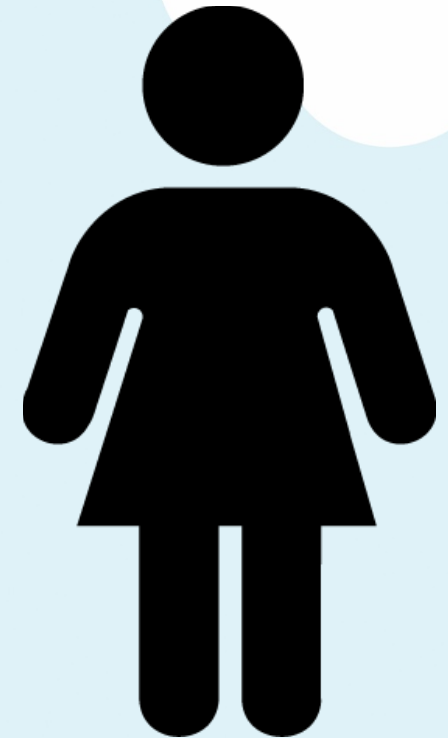
**Biological  
Parent**



# Other Factors to Consider... **Parent's Trauma**

## **Biological Parent**

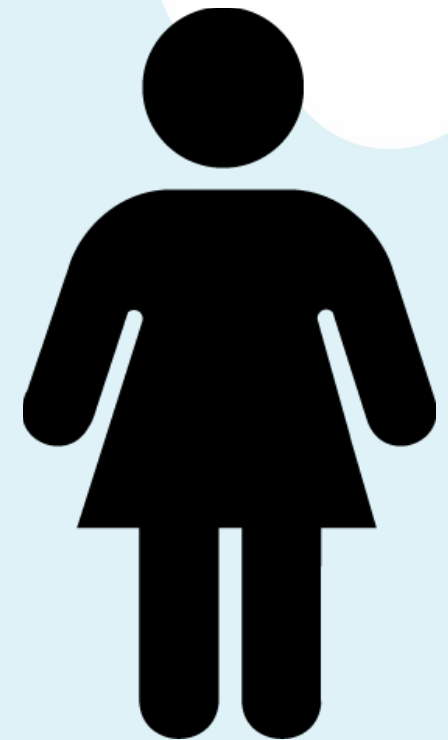
- ▶ Shock
- ▶ Protest
- ▶ Detachment
- ▶ Adjustment



## Other Factors to Consider...**Parent's Inability to Partner**

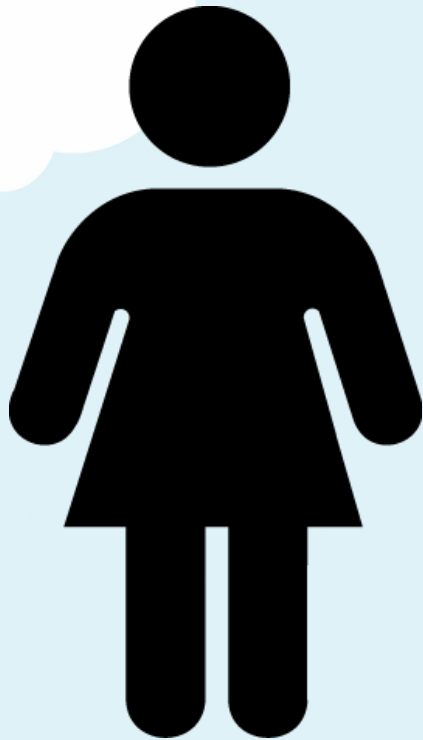
### **Biological Parent**

- ▶ Emotionally or psychologically
- ▶ Addiction or debilitating issues
- ▶ Restrictions



## Other Factors to Consider... **Resource Family Reservations**

### **Resource Family**



- ▶ Fear of the unknown
- ▶ Fear for the safety and well-being of the child as well as your own family
- ▶ Stress over confrontation
- ▶ Concern for family privacy
- ▶ Concern about caring for a related child and family conflict

# How to Support Co-Parenting

**Establish  
First Contact**

**Maintain  
Contact**

**Expect Some  
Resistance**

**Be Positive**

**Encourage  
Questions**

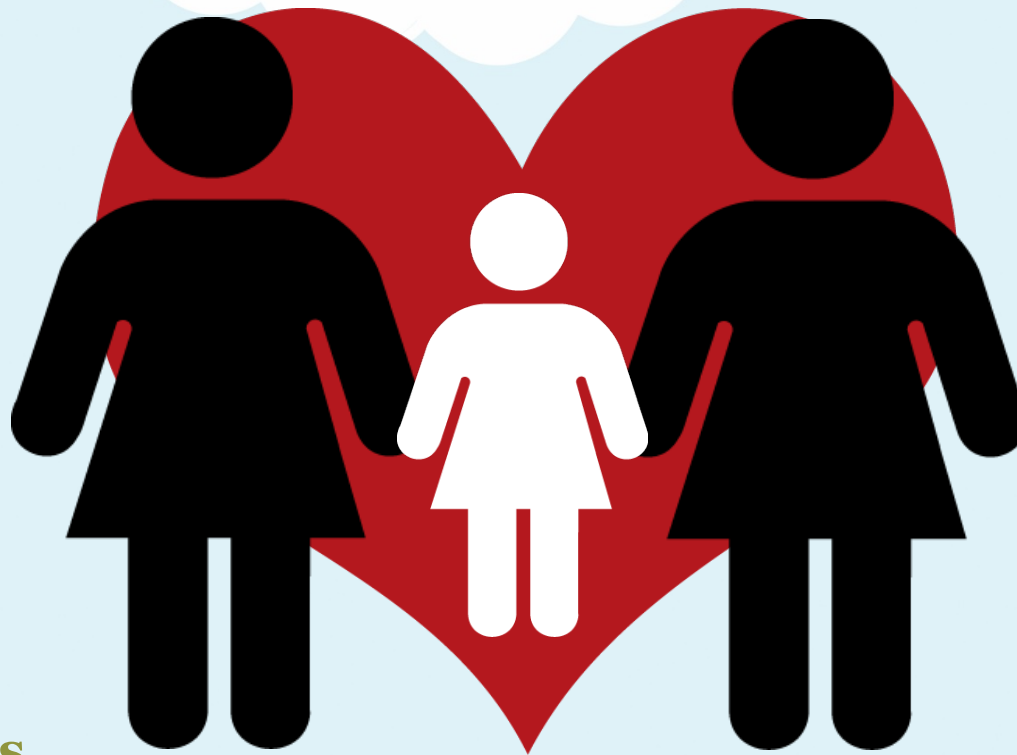
**Build on  
Strengths**

**Ask  
Questions**

**Use  
Reflective  
Listening**

**Plan For  
Visitations**

**Prepare  
for Setbacks**



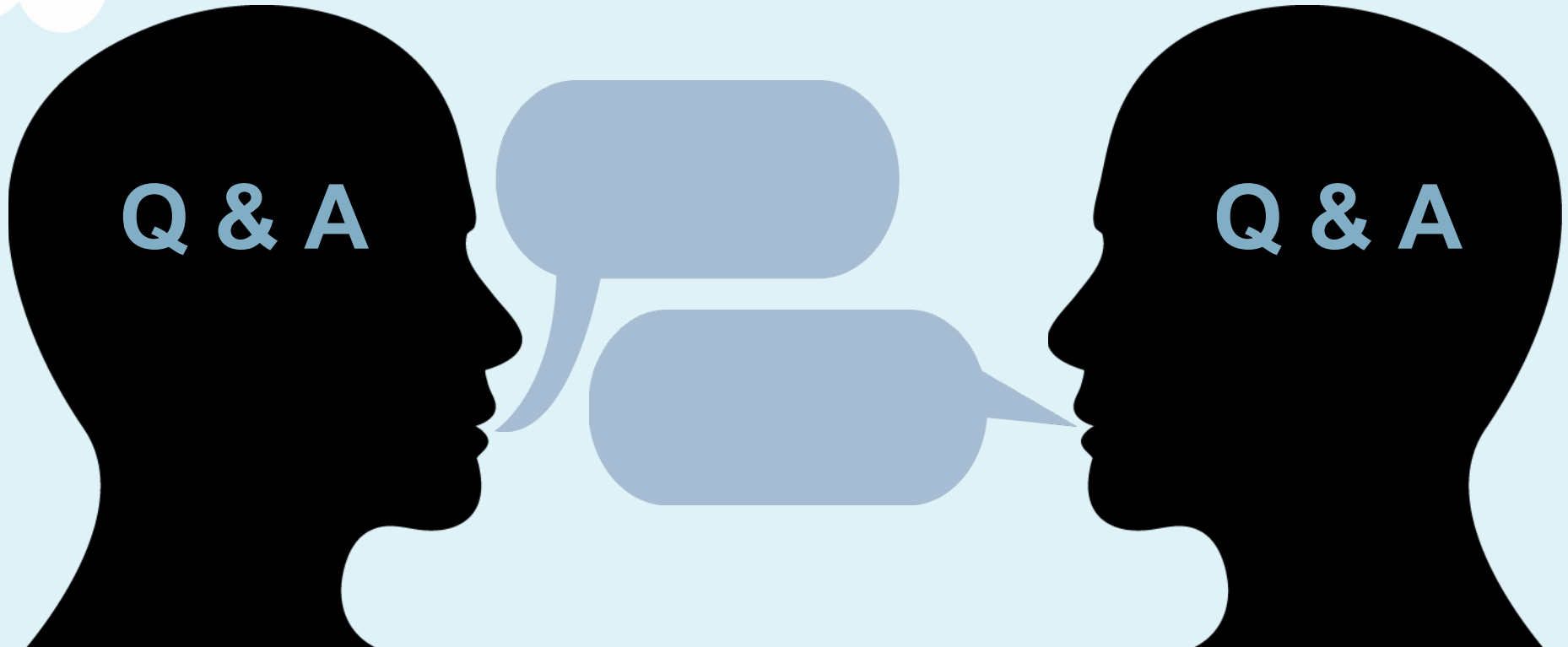


# Activity

## The Dialogue of Co-parenting

Q & A

Q & A



# Activity



Supporting  
Family  
Connections  
During  
and Between  
Visits

# Case Studies



**Mentoring  
a Family:  
Working with  
the Family to  
Support  
Children**

# End of Day Three

**Thank you  
for participating.**

